



stm

VISIONARIES BY NATURE

stm
MADE IN THE USA

| MODEL # | SERIAL # | TYPE |
|------------|----------|------|
| STM-MR01-1 | 202 | 1 |

ELECTRICAL FRONT #
MFR 20190025

DATE OF MFG. VOLTS
300022 120

| CYCLES | PHASE | P.I.A. | L.M.P.A. |
|--------|-------|--------|----------|
| 50 | 1 | 5.2 | 5.3 |

SHOULDER CONDUIT CURRENT
50A AT 120VAC

REPLACEMENT CONTROL PANEL FOR INDUSTRIAL MACHINES
80007 TECHNOLOGICAL MANUFACTURING

MINI-ROCKETBOX

PLUS+

ADVANCED PRE-ROLL PACKING & FILLING



MINI-ROCKETBOX PLUS+

143 PRE-ROLLS PACKED IN 45 SECONDS

\$6,600

The Mini-RocketBox PLUS+ pre-roll machine combines power, efficiency, and versatility to maximize pre-roll production. Capable of producing 72 to 143 pre-rolled cones in under a minute, this machine is perfect for startups on a budget.

- **Fully Adjustable Dial for Desired Tightness & Pack**
- **Evenly Fills Cones Layer-by-Layer for Optimal Smokeability**
- **Reduces Tedious Manual Labor**
- **Durable Stainless Steel for Commercial & Industrial Use**
- **Compatible with STM Weighing & Closing Modules**



**1-YEAR
WARRANTY**



**OSHA
COMPLIANT**



**MADE IN
USA**

INCLUDES:

MINI TOP TRAY
MINI BOTTOM TRAY
MINI LOADING BOX

CLICK OR SCAN

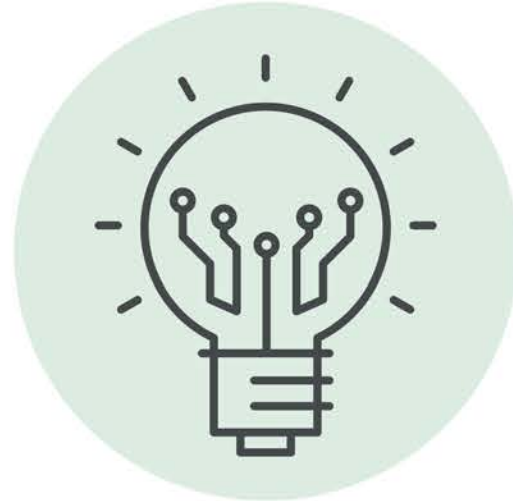


WHY THE ROCKETBOX?



HIGHER OUTPUT, FASTER ROI

Producing 43% more per cycle than its closest competitor, one single Mini-RocketBox machine can fill and pack up to 11,000 pre-rolls daily. Reduce labor & overhead costs, meet demands, accept larger contracts and more - all with one unit that grows and scales with your business.



EXCLUSIVE ROCKETBOX TECHNOLOGY

Using varying frequencies of vibration, the Mini-RocketBox PLUS+ creates high-quality, evenly packed pre-rolls that allow for a superior consumer experience. In an industry saturated with competition, producing high-quality products is key to protecting your brand's image, retaining a competitive advantage and promoting long-term, repeat customers.



TRAINING VIDEOS & PORTAL ACCESS

Efficiency is critical to keeping costs down. Each Mini-RocketBox PLUS+ includes exclusive access to the STM Client Training Portal with in-depth training information and resources, enabling your team to learn from the experts and get dialed-in quickly.

MINI-ROCKETBOX PLUS+

ACCESSORIES



143-Joint Top Tray

\$575

For Use With Any
143-Bottom Tray



72-Joint Bottom Tray

\$517.25

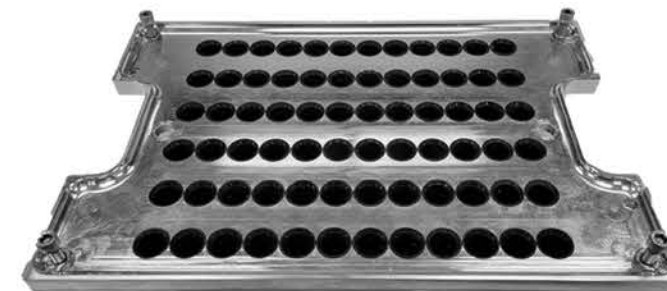
Compatible With Atomic Closer
See Page 7 for Paper Sizing



143-Joint Bottom Tray

\$575

See Page 7 for Paper Sizing



72-Joint Top Tray

\$517.25

For Use With Any
72-Bottom Tray



Mini Loading Box

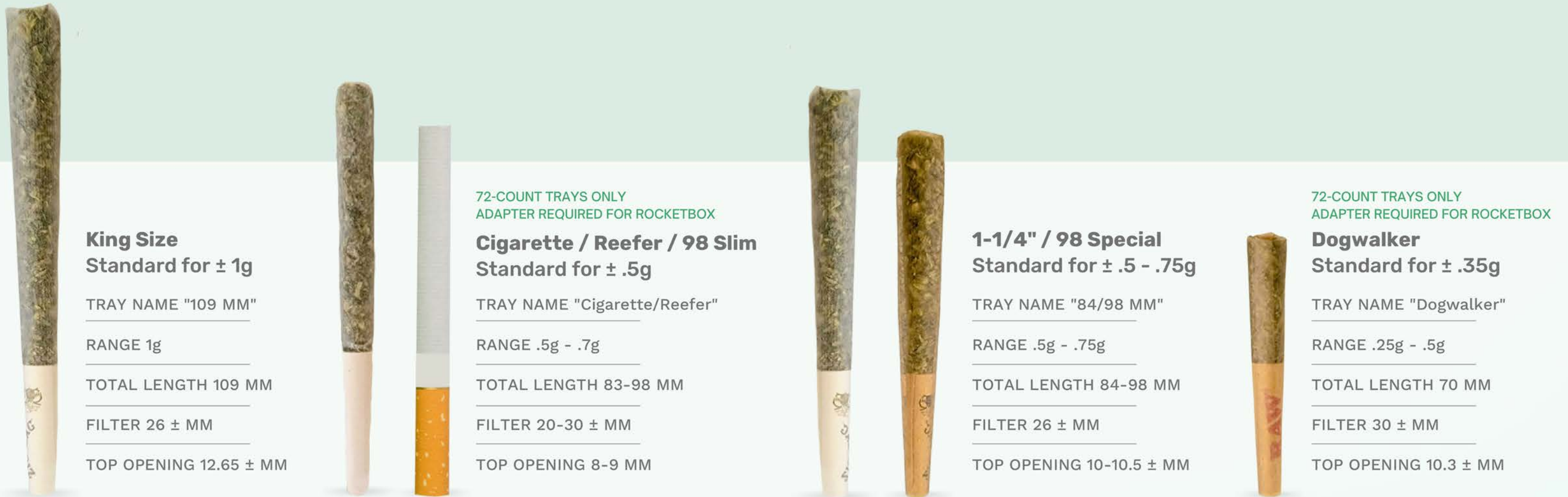
\$402.50

Holds Bottom Tray to
Load Cones

CLICK OR SCAN



WHAT CONES ARE COMPATIBLE?



To alternate between weights within these ranges, operators may raise/lower the height of the Top Tray, adjust grind size, bulk density, and/or machine cycle time. Papers used should at minimum match the dimensions listed for each tray's length and opening to achieve optimal results. Both the Top Tray's metering system and RocketBox density software are designed to work with standard sizes (84/98 MM & 109 MM), therefore custom sizes such as the Dogwalker & Cigarette/Reefer trays will require additional dialing-in.

COMPLETE PRE-ROLL SOLUTIONS

MODULAR SYSTEMS FOR FACILITIES OF ALL SIZES



GRIND.

PACK.

WEIGH.

CLOSE.



Step 1.
Grind and prep flower with the Revolution.

Step 2.
Add papers, then place trays into RocketBox. Add material to fill and pack.

Step 3.
Place filled tray onto LaunchPad for a quick QC on weights.

Step 4.
Add tray into the Closer and press Go. Folded joints are dispensed for easy collection.

STM PRE-ROLL BUNDLES

The perfect bundle to get your facility started in optimal pre-roll prep and production.

MINI PRE-ROLL BUNDLE \$13,200

CLICK OR SCAN



(1) Mini-RocketBox Pre-Roll Machine

INCLUDED ACCESSORIES

- (1) 143-Joint Top Tray
- (1) 143-Joint Bottom Tray
- (1) Mini Loading Box
- (1) Density Testing Cylinder

(1) Mini-Revolution Grinder

INCLUDED ACCESSORIES

- (1) Fine Blade Disc
- (1) Coarse Blade Disc
- (1) Collection Bin
- (1) 2-Pack Extra Blade Discs



2.0 PRE-ROLL BUNDLE \$37,812

(1) RocketBox 2.0 Pre-Roll Machine

INCLUDED ACCESSORIES

- (1) 453-Joint Bottom Tray
- (1) 453-Joint Top Tray
- (1) Loading Box
- (1) Density Testing Cylinder

(1) Revolution 2.0 Commercial Grinder

INCLUDED ACCESSORIES

- (1) Dual-Blade Set
- (1) Fine Particle Screen
- (1) Coarse Particle Screen
- (1) Pair of Cut-Proof Safety Gloves

CLICK OR SCAN



FREQUENTLY ASKED QUESTIONS

HOW DOES THE MINI-ROCKETBOX PLUS+ WORK?

Mini-RocketBox technology creates varying frequencies of vibration that are specially concentrated in the bottom cone holding tray. Versus shaking or bouncing the papers, this method allows for the material itself to vibrate and fill each cone evenly, layer-by-layer – avoiding air pockets, weak necks and other inconsistencies.

Further, the Mini-RocketBox has a fully adjustable motor speed dial from 1%-100% with low, medium and high markers. With the PSI automatically built in, the operator can use the variable dial to adjust the motor speed and therefore work with a variety of different material types, densities and strains. The patent-pending Mini-RocketBox tray system also includes funnels which directly taper inside of the papers below, allowing for better weight accuracy, fill rates, product quality and consistency.

HOW DOES THE MINI-ROCKETBOX PLUS+ INCREASE MY EFFICIENCY?

By producing an optimal pack during the machine cycle, the Mini-RocketBox reduces tedious manual labor (such as hand-packing, pouring material in/out, etc.) that is typically necessary with other machines after each cycle is complete. In addition, significantly faster output helps increase your overall profit margins by decreasing your labor costs and expenses.

As a real-world example, it would be required to run/restart our closest competitors machine a minimum of 50 times to produce 5,000 pre-rolls, while processing that same volume with the Mini-RocketBox would only amount to 35 cycles.