



MINI-ROCKETBOX PLUS+

ADVANCED PRE-ROLL PACKING & FILLING



MINI-ROCKETBOX™

PLUS+

USER MANUAL V1.3



Sesh Technologies Manufacturing, Inc.
3223 North Market Street, Spokane, WA 99207
Phone: (509) 204-3168 | Web: www.stmcanna.com

WEIGHT & DIMENSIONS	Approximately 35 lbs Machine Dimensions 14" L x 17" H x 10" W
VOLUME CAPACITY	143 or 72 Pre-Rolls Every Cycle
POWER	Standard 110V Full-Load 5.2 Amps 5-1/2 ft. Cord Length
MATERIALS	Encased in SAE 304 Stainless Steel Aluminum & Other Food Grade Components
CYCLE CUSTOMIZATION	Single Cycle Operation with Variable Dial
PAPER COMPATIBILITY	Compatible with 84, 98, and 109 mm cones
SOFTWARE & UPGRADES	Manual Control Panel
TRAINING	Training Videos via Client Portal
COMPLIANCE	OSHA Compliant UL-Listed Components 100% Food-Grade
LIFE CYCLE	10 Years
OPERATION	Patent-Pending Pneumatic Leveling System

Table of Contents	1	Loading & Unloading Cones	8
Break-In Procedure	2	Getting Started	9
Components	3	Operation of Machine	10
Lift Plate	5	Density Testing	11
Adjustable Top Tray	6	Cleaning & Maintenance	12
		Terms of Business	13

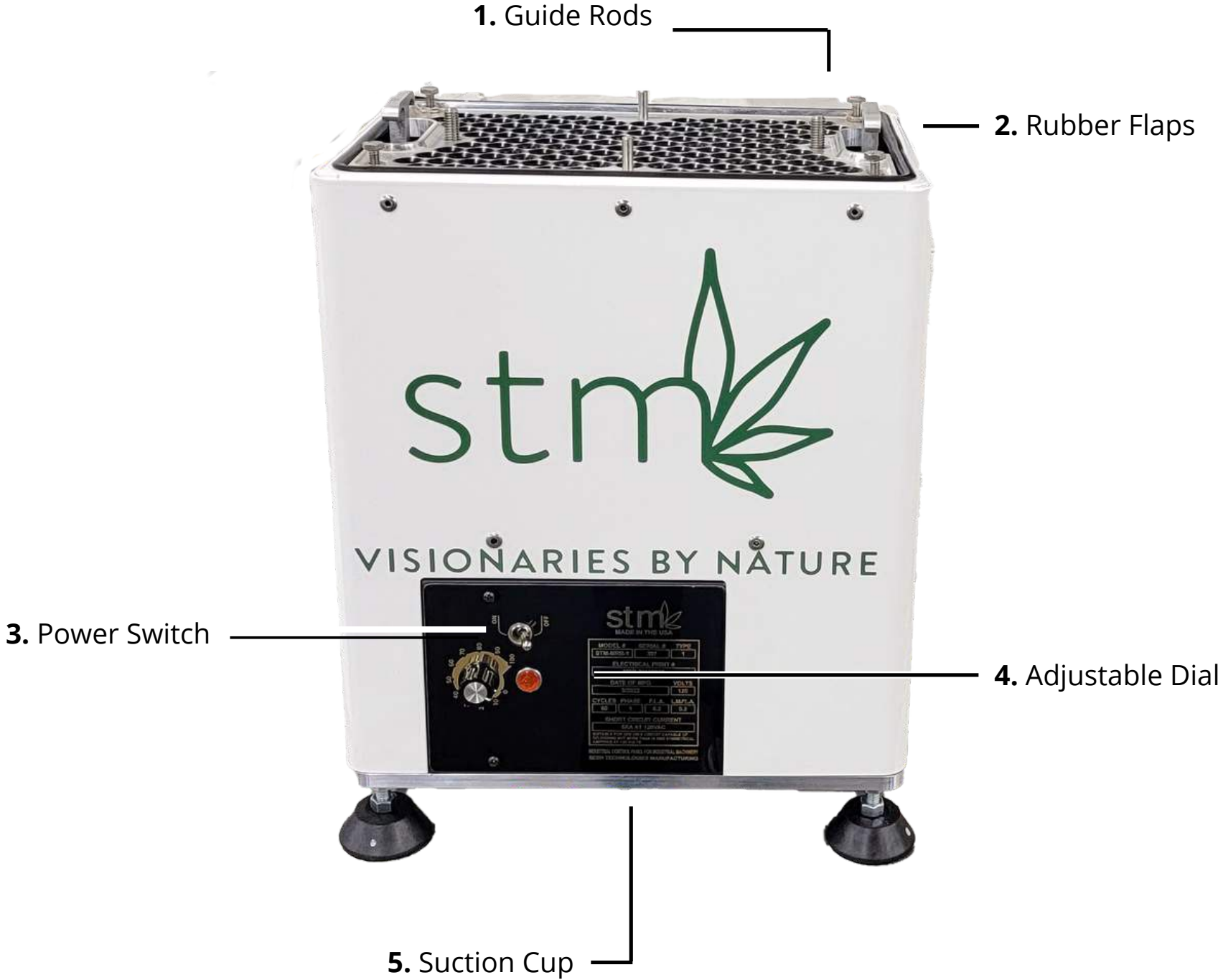
Thank you for being a valuable and loyal client of STM. Our goal is to bring our customers the very best in product quality and customer service. We value your feedback and use it to evaluate what to improve and/or update in our existing product line.

The Mini-RocketBox™ Plus+ uses a direct funneling system. When used properly, this will ensure your material remains contaminate-free throughout operation. The Top Tray funnels are directly inserted into the opening of the pre-roll cones. This only allows what is being fed onto the Top Tray to enter the desired pre-rolls in the Bottom Tray.

PLEASE ADHERE TO THE RECOMMENDED GUIDELINES TO BREAK-IN YOUR MINI-ROCKETBOX™ PLUS+

- 1** After setting up the Mini-RocketBox™ Plus+, run the machine through multiple cycles with each of your tray systems - empty and unloaded. Watch for and remove any debris in-between the trays and in the bottom of the shaker box. We take great care to mitigate this during production, however, due to the intense vibration some debris may appear.
- 2** When un-boxing and the initial dry runs are complete, you may proceed with regular/normal use of the Mini-RocketBox™ Plus+. Until the machine has been ran for 400 hours, discard all materials which have dropped inside the bottom of Mini-RocketBox™ Plus+.
- 3** After the Mini-RocketBox™ Plus+ has ran for 400 hours you may reuse the material that has been collected in the bottom of the shaker box. Only use this product after visual inspection for debris has been completed.

Visual inspection should always remain part of the operation for quality control standards.



- 1. Guide Rods**- Threaded rods to guide the top and bottom trays into machine. Also where the wing nuts are installed to secure Trays into MRB+.
- 2. Rubber Flaps** - Prevents material from falling into the base of machine.
- 3. Power Switch** - Turns the machine on and off.
- 4. Adjustable Dial** - Controls the vibration intensity.
- 5. Suction Cup** - Creates a strong suction to adhere machine to table.

7. Adjustable Top Tray - Used to funnel material into bottom tray and control desired fill level of pre-rolls.

8. Bottom Tray - Cone holding tray (84, 98, or 109 mm cones).

9. Wingnuts + Washers - Threads onto guide rods to secure Top and Bottom Tray into Mini-Rocketbox.

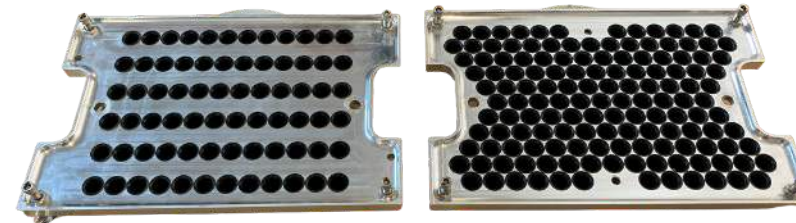
10. Loading Box - Holds Top/Bottom Trays for easy loading and unloading and also guides the marrying of the trays.

11. (2) Reset Brackets - Use to reset the adjustable top tray to the default 1/4" spacing.

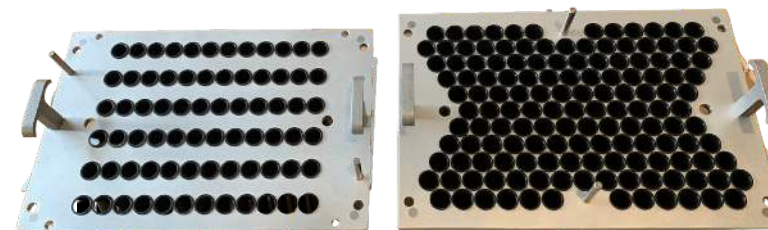
12. Riser Bolts - Adjusts the lift plate for 84mm (1-1/4) and 98mm (98 Special) cones. (x2 sets of 4)

13. Density Beaker - 10 mL graduated beaker used during density tests.

7. Adjustable Top Tray



8. Bottom Tray



9. Wingnuts + Washers



10. Loading Box



11. Reset Brackets



12. Riser Bolts



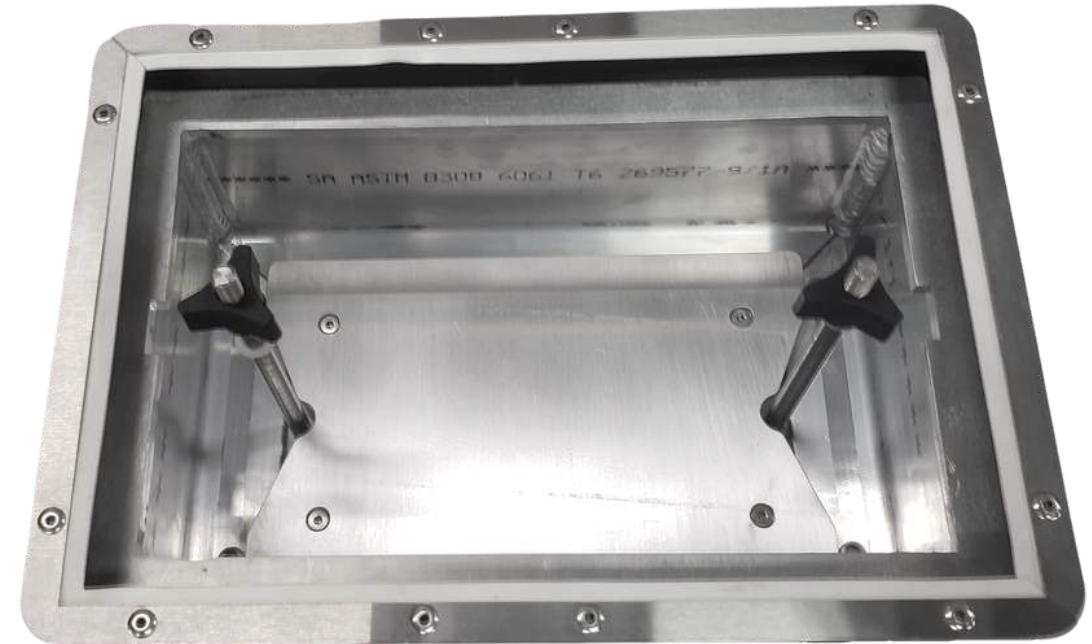
13. Density Beaker



The Lift Plate rests on the four (4) default risers bolts connected to the bottom of the shaker box.
 Because all papers are rolled by hand, this allows an even fill line from the bottom up.

The Lift Plate uses four (4) Riser Bolts to adjust for 98mm (A) and 84mm (B) pre-rolls. The shaker box always comes with four (4) default riser bolts that are designed for 109mm King Size pre-rolls.

DO NOT REMOVE THE DEFAULT SPACERS.



Please ensure the correct Riser Bolts are installed prior to use.

ADJUSTING THE LIFT PLATE

- 1 Remove the (4) flathead screws with a 5/32 Allen wrench. Then remove the Lift Plate completely from the shaker box.
- 2 With the lift plate removed, install the desired Riser Bolts (4) onto the fixed riser bolts on the bottom of the shaker box.
 See Riser Bolt image to right
- 3 Once Riser Bolts are installed, align and re-install the Lift Plate. Secure in place with the four (4) flathead screws using a 5/32 Allen wrench.

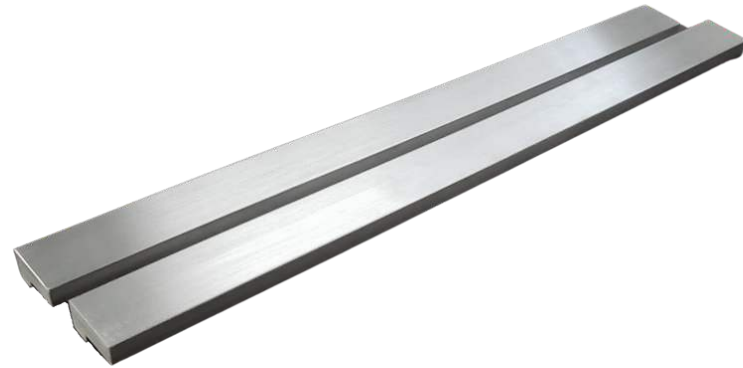
Riser Bolts should ALWAYS be installed UNDER the lift plate



'A' RISER BOLTS
 Used for 98mm pre-rolls



'B' RISER BOLTS
 Used for 84mm pre-rolls



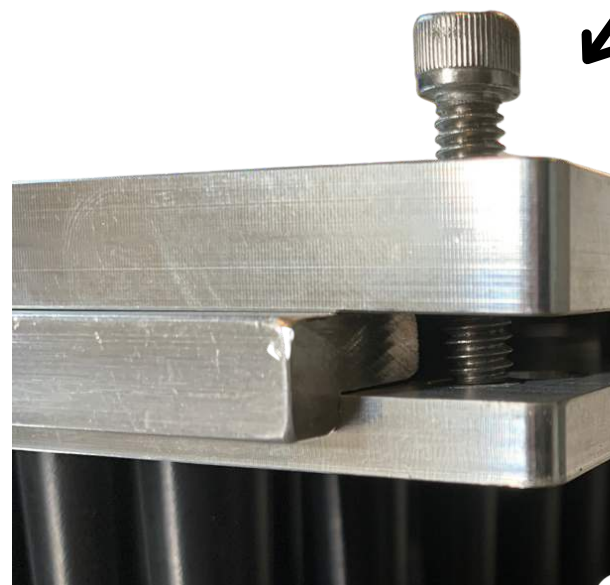
Included Reset Brackets

The RocketBox 2.0 includes (2) removable Reset Brackets to reset the height of the Top Tray to the default 1/4" setting.



Placement of Reset Brackets

Reset Brackets fit in between the Top and Bottom Tray. Make sure to keep the Reset Brackets in a convenient location for future adjustments.



Placement of Adjustable Bolt

The Adjustable Bolt touches the Bottom Tray with the default 1/4" adjustment. Ensure all (4) bolts are adjusted evenly.



The Adjustable Top Tray gives the ability to refine and control the weight of the pre-rolls. This tool allows the operator to lower and raise the funnels in and out of the paper pre-rolls. This will increase or decrease the overall volume and height of fill lines in the pre-rolls.

The Mini-Rocketbox Plus+ is delivered with an Adjustable Top Tray. The default adjustment is set at 1/4", easily adjusted with a 7/16" wrench.

ADJUSTING THE TOP TRAY

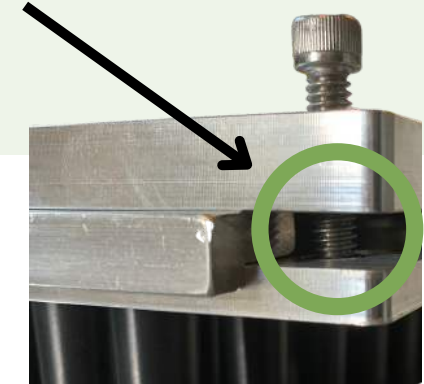
- 1 Loosen the bottom nut on the Adjustment Bolt with a 7/16" closed-end wrench. Repeat with each of the (4) bottom nuts.
- 2 Turn the Adjustment Bolt counter-clockwise to lower the Top Tray, or clockwise to raise the Top Tray. Repeat for all (4) Adjustment Bolts.
- 3 Tighten the Adjustment Bolt bottom nut with 7/16" closed-end wrench to secure into place. Repeat with all (4) bottom nuts.

ADJUSTABLE TOP TRAY IS EQUIPPED WITH:

- (4) 1/4" Adjustment Bolts
- (4) 1/4" Bottom Nuts
- (2) Removable Reset Brackets

RESETTING THE TOP TRAY

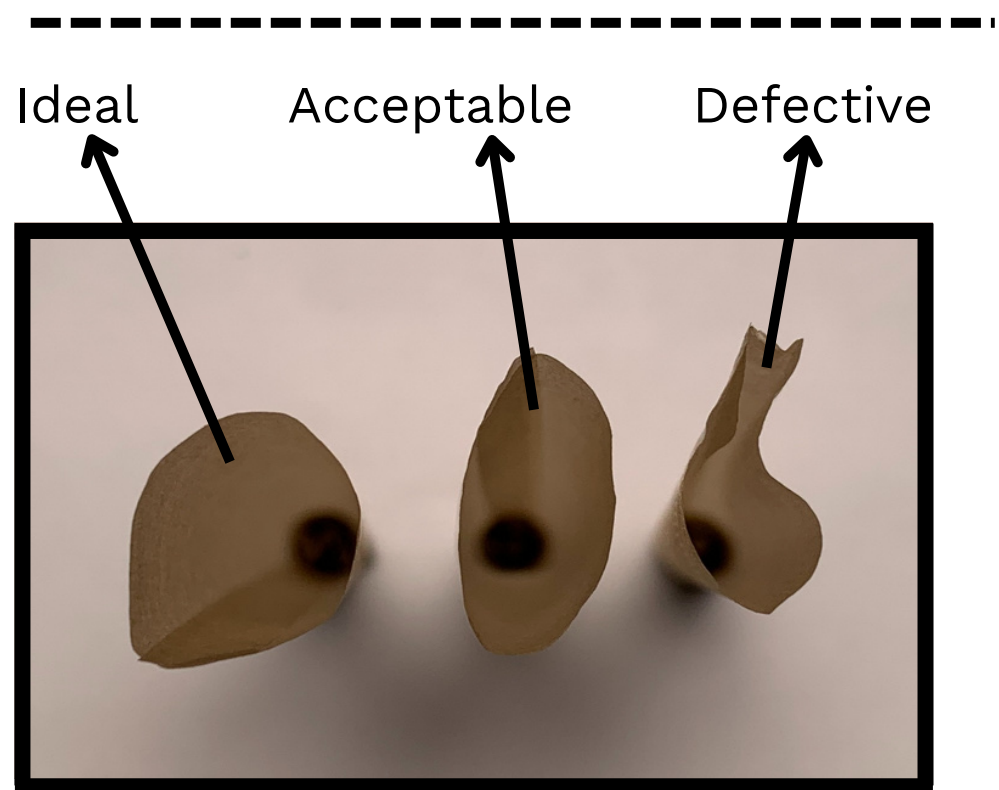
- 1 Add the (2) Reset Brackets to each side of the Bottom Tray. Place Adjustable Top Tray on top.
- 2 Loosen all hex bolt lock nuts with a 7/16" wrench. Repeat for all (4) bottom nuts.
- 3 Turn the Adjustment Bolts until it just touches the Bottom Tray. Tighten the hex bolt lock nut to lock into place. Repeat with all (4) bolts. This is the default 1/4" setting. *See Picture*



LOADING CONES

Always use good quality paper cones and discard all papers that appear to be defective.

- 1 Place the Bottom Tray into the Loading Box.
Carefully drop cones into the Bottom Tray. Discard any cones that appear bent, crushed, or otherwise defective.
- 2
- 3 Place Top Tray above the Bottom Tray once loaded with pre-rolls. Marry the trays together and carefully place into the Mini-RocketBox™ Plus+.



UNLOADING CONES

Once the cycle in the Mini RocketBox™ Plus+ is complete, it is safe to unscrew the wingnuts, remove the washers, and remove the combined trays.

- 1 Remove trays and place into Loading Box. Set the Top Tray aside. The extra material in the Top Tray may be reclaimed.
- 2 Remove the Bottom Tray from the Loading Box. Carefully place it onto a solid flat surface. This will push the cones upwards and out of the Bottom Tray for easy examination and removal.

PREPARING WORK AREA

The space required for pre-roll production varies based on volume needed. See the suggested work areas below:

Grinding Area

Material Prep for Mini-RocketBox™ use.

Loading Area

Dedicated to loading cones into Bottom Trays.

RocketBox Area

For trained person(s) to operate the Mini-RocketBox™.

Packing Area

Dedicated to closing and packaging cones.

SUGGESTED TOOLS AND ACCESSORIES

- Pitcher for Material
- Shop Vac
- Stainless Steel Chopsticks
- 70%+ Isopropyl Alcohol
- Thousandths Scale
- Spray Bottle
- Pipe Cleaners
- Collection Bin



POWERING ON THE MINI-ROCKETBOX PLUS+

- 1 Power on the Mini-RocketBox PLUS+ by plugging it into a 120v outlet.
- 2 Press the orange button to the ON position.

MOUNT & DISENGAGE SUCTION CUP

- 1 Use the Mini-RocketBox™ PLUS+ on a solid, flat surface such as a stainless steel table or thick table-top surface.
- 2 Clean surface with alcohol and place on the table. See the image below for proper placement.
- 3 Press white button on suction cup repeatedly until the button stays depressed to the red line.
- 4 To disengage suction cup, pry away rubber edge of the cup.



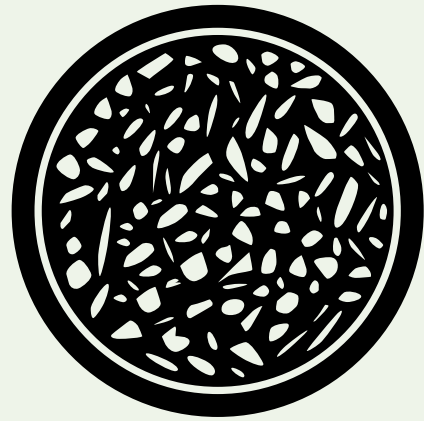
USING THE MINI-ROCKETBOX™ PLUS+

- 1 Load trays into Mini-RocketBox™ PLUS+, tighten wing nuts, and power ON.
- 2 Turn knob to High setting and begin adding material, ensuring all material is spread evenly to all cones.
- 3 Run the machine for approximately 40 seconds. This may vary dependent on your material
- 4 Turn the dial during run for a variable speed and pack. May require longer time for light, fluffy strains.



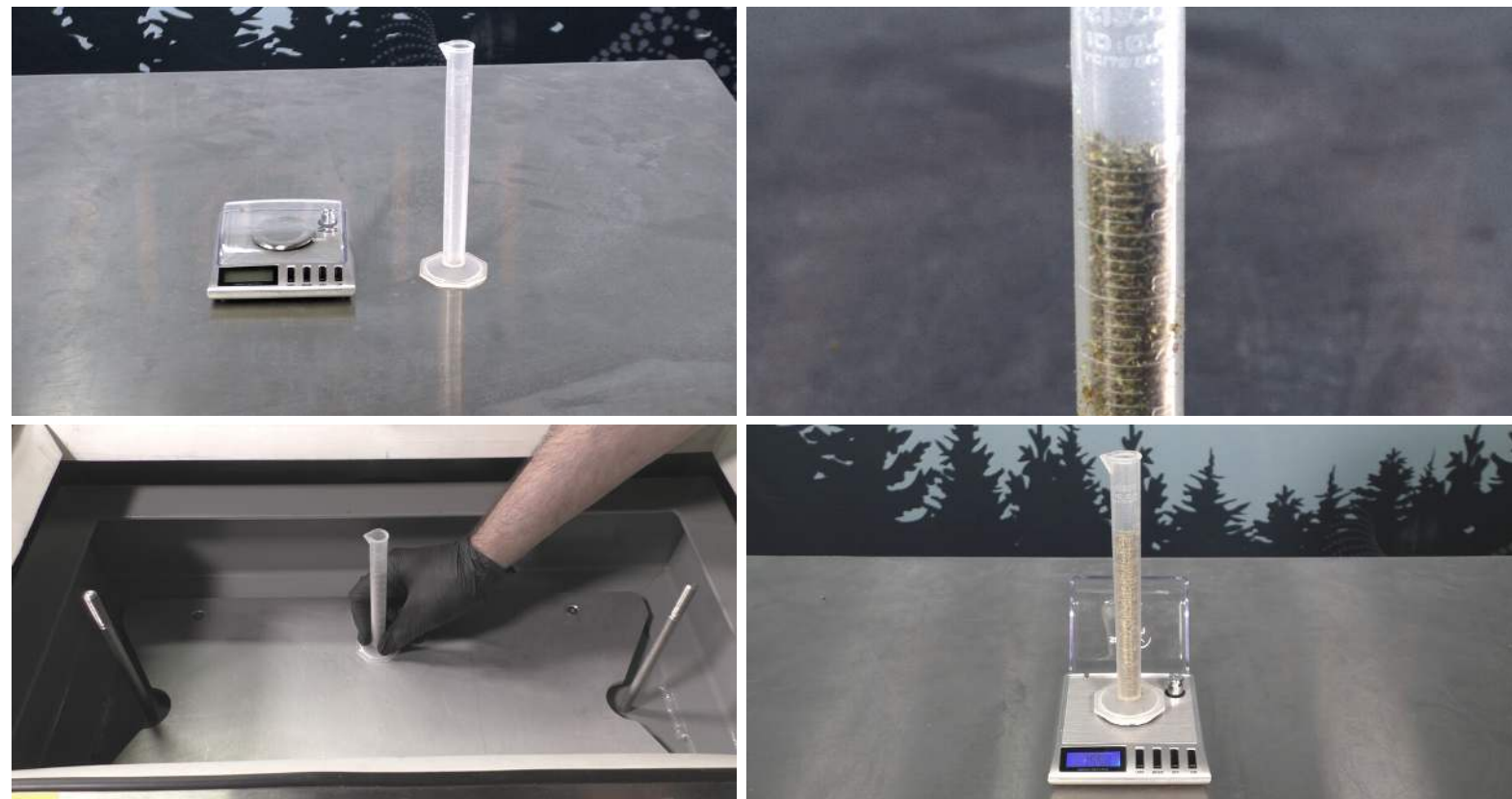
Helpful Tips

- Sift material for better quality pre-rolls.
- Add more material if cones don't fill completely.
- Refer to density training videos for desired weight and results. bit.ly/rb2-density-testing



WHAT IS DENSITY?

Density is a characteristic property of a substance. The density of a substance is the relationship between the mass of the substance and how much space (volume) it takes up.



Helpful Tips

- Repeat density test 3x and average for optimal results.
- It is recommended to use a thousandths scale for accuracy.

PERFORMING A DENSITY TEST

- 1 Tare empty 10 mL beaker on thousandths scale.
- 2 Fill the included beaker just above the 10 mL line with ground material.
- 3 Hold filled beaker firmly onto lift plate and begin density test by turning machine "ON." Run test on the highest speed.
- 4 Continue adding material until it settles at the 10ml fill line while the beaker is vibrating in the machine. Time your test for 1 minute.
- 5 Remove beaker from machine. Place onto the tared scale and record weight. Move the decimal one place to the left - this will be the calculated density of the tested material.

Example: If the scale weight is 1.590, then 0.1590 will be the density value of your tested material.

TIP: 0.1850 is an ideal density*



WARNING: Do not remove plastic cones from Top or Bottom Tray - you may void your warranty.

HOW TO CLEAN

Each tray can be separated and cleaned using regular soap and water. To clean stainless steel, use isopropyl alcohol and a soft cloth. Saturate the rag with at least 70% isopropyl alcohol and wipe down all areas thoroughly.

Clean as often as needed or required. Set the Mini-RocketBox™ PLUS+ on a regular cleaning schedule, dependent on use and materials.

- 1 Use a 3/16 Allen wrench to remove the lift plate from the bottom of the shaker box.
- 2 Vacuum the bottom of the shaker box, Top Tray, Bottom Tray, and Loading Box.
- 3 Spray and wipe the Lift Plate, Shaker box, Finishing Base, and trays with at least 70% isopropyl alcohol solution.

99% Isopropyl is recommended for more aggressive cleaning needs.

PURCHASING TERMS & CONDITIONS

All products are first-come-first-serve and that receipt of payment is required in order to receive a confirmed shipping date in the queue. Due to high demands, certain items may have a lead time of 4-8 weeks or more from payment date, unless otherwise stated. Following the receipt of an invoice, STM Canna must receive payment within a maximum of 7 days before the invoice expires – leaving lead times, quoted prices, specials and discounts on all items subject to change. If a deposit is applicable for any special reason, my deposit is non-refundable. Purchaser agrees to adhere to the Customer Awareness Program and Terms of Business herein.

CUSTOMER AWARENESS PROGRAM (C.A.P.)

STM takes pride in the products we make and the services we offer. To ensure our customers fully understand the services we provide, along with the capabilities and expectations of our products, we have executed and outlined the Customer Awareness Program contents below: A 12-month warranty on each product that is applicable with regards to manufacturer's defects, including parts and labor. STM Client Services department is dedicated to ensuring the success and satisfaction of all STM clients. As such, product on-boarding programs are provided to familiarize our clients with their new equipment. STM Tech department provides our clients with all software updates, phone support and onsite support, as needed. Training (RocketBox) with our technicians to train your staff on best practices to accomplish your desired results for a quality finished product. An easy-to-use client portal with tools such as product F.A.Q.'s and Best Practices, along with an extensive video library to help guide you towards success with your STM equipment.

EXPECTATIONS AND CAPABILITIES OF YOUR STM EQUIPMENT: STM MINI-ROCKETBOX

With step-by-step training videos and resources, you will receive access to best practices, of running the equipment, as well as guidance on the cleaning and maintenance of your machine and accessories. By following the guidelines provided to you via the user manual and training videos, you will be able to produce a quality and consistent product that will be easily repeatable. The shaker box within the machine contains an area where material may escape during operation. STM advises against re-purposing this excess waste due to potential metal contaminants residing in the shaker box from regular usage. Results are not guaranteed and can greatly vary from operation to operation.

WHO IS COVERED?

With step-by-step training videos and resources, you will receive access to best practices, of running the equipment, as well as guidance on the cleaning and maintenance of your machine and accessories. By following the guidelines provided to you via the user manual and training videos, you will be able to produce a quality and consistent product that will be easily repeatable. The shaker box within the machine contains an area where material may escape during operation. STM advises against re-purposing this excess waste due to potential metal contaminants residing in the shaker box from regular usage. Results are not guaranteed and can greatly vary from operation to operation.

EXTENT OF WARRANTY

There are no warranties on paper products. Machines come with a 1-year parts and labor warranty. See Returns below.

TROUBLESHOOTING

- Reference your instruction sheet and double-check all instructions.
- Always take time to examine problems in detail.
- When all else fails, please call the STM technical support line at (509) 204-3164 or email us at clientservices@stmcanna.com.

The technical line is open 8:00am – 4:00pm Monday through Friday, Pacific Time. Please have the following information handy: Name of Company the purchase was made under, Date of Purchase, and Serial number.

TERMS

All orders must be paid in full before the order is placed. Order quotes expire within 10 days. STM Canna & STM Supply reserve the right to specify collection by certified check, money order, or company check. Personal checks are not accepted.

RETURNS

No Refunds/Exchanges: We do not accept returns or exchanges unless the item purchased is defective. No item will be accepted for return without prior approval. All approved returns must be accompanied with a return authorization (RA) number and must be in new and unused condition. All RA numbers must be clearly displayed on the outside of the box. All returns are subject to restocking fees, not to exceed 20% unless damaged. Refunds are issued in the form of like payment. All refused shipments are subject to a 20% restock fee and all applicable freight charges. All items that we ship are insured; if an item comes that is damaged from shipping, we will work closely with you to get you replacement parts as soon as possible. We may also request pictures or other identifying information to establish that damage was caused by the shipping carrier.

If you receive an item you believe is defective, please contact us with details of the product at (509) 204-3164 or email us at clientservices@stmcanna.com.

We may ask you for pictures, video, descriptions, and other identifying information to make a determination. If you are unable to provide adequate documentation requested, your return request will be denied. If your item is deemed defective, which is solely at STM's discretion, we will issue you an RMA # which you will need to place in and on the package. After receiving your RMA #, you may send the item to:

STM Canna
3223 North Market St.
Spokane, WA 99207

Upon receipt of the returned product, we will fully examine it and notify you via e-mail, within a reasonable period of time, whether you are entitled to replacement as a result of the defect. If you are entitled to a replacement, we will replace the product at no additional cost to you.

SHIPPING

All orders must be paid in full before the order is shipped. Order quotes expire within 10 days. Orders received will fall in line and be serviced accordingly where the shipment date may be sooner than originally quoted. We will ship by the most reasonable means based on the volume of the order, unless otherwise specified.

SPECIAL ORDERS

All special-order items must be paid in full before the order is placed. These items are non-returnable and no refund will be given. All special-order items will also take a longer period of time for the customer to receive, which will be quoted at the time of payment.

LIABILITY

The purchaser of any products releases the manufacturer of those parts and STM Canna from all liabilities pertaining to use of the products.

CLAIMS

Since ownership of product transfers at the FOB point, claims for damaged, lost, or short shipments must be made at the time of receipt.

TECHNICAL QUESTIONS

Since ownership of product transfers at the FOB point, claims for damaged, lost, or short shipments must be made at the time of receipt.