



MINI-ROCKETBOX

PLUS +

ADVANCED PRE-ROLL PACKING & FILLING



MINI-ROCKETBOX PLUS+

72 or 143 PRE-ROLLS PACKED IN 45 SECONDS

\$6,600

Built like a tank, the patented Mini-RocketBox PLUS+ commercial pre-roll machine is the industry leader which combines power, efficiency, and versatility to maximize pre-roll production output.

- **Produce up to 10K+ pre-rolls a day with 2-3 people***
- **Produce up to 1250 or more per hour***
- **Sizes: 70mm, 84mm, 98mm, 109mm, custom**
- **No pre-weighing of material necessary (like with KnockBox)**
- **Lift plate to level cones from the bottom for even filling**
- **Adjustable Top Tray regulates fill volume for accurate weights**
- **Durable Stainless Steel for Commercial & Industrial Use**
- **Compatible with 70mm dog walkers, 84mm, 98mm and 109mm**
- **Designed for easy operation, maintenance and cleaning.**



CLICK OR SCAN

INCLUDES:

- MINI TOP TRAY
- MINI BOTTOM TRAY
- MINI LOADING BOX



* Results will differ depending on the material, equipment, personnel, facility, controls and the specific processes employed. STM is dedicated to helping you attain optimal results through our equipment and processes.

WHY THE ROCKETBOX?

Two Models Available:

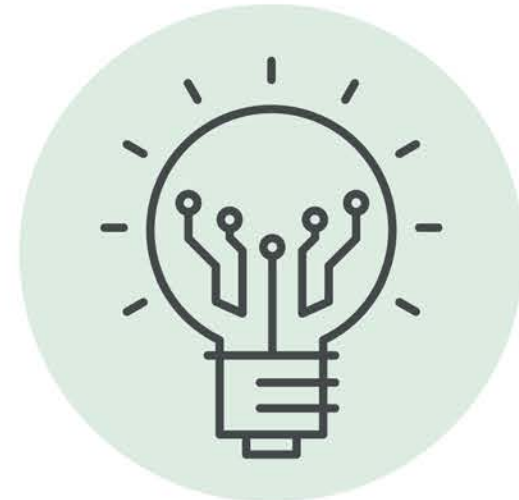
- **143 Mini-RocketBox+** uses the 143-joint trays. Only for customers who want to fill and pack joints. **Not for use with the One-tray workflow systems.** Sizes: 84mm, 98mm & 109mm tray sizes.
- **72 Mini-RocketBox+** uses the 72-joint trays. Use with 84mm, 98mm, 109mm, Dogwalker and custom sizes only on request. **Compatible with One-tray workflow systems.**

The 72-joint tray is for use in the One-tray workflow and can be used with the Atomic Closer, Astro Infuser and LaunchPad scale.



HIGHER OUTPUT, FASTER ROI

Producing up to 43% more per cycle than its closest competitor, one single Mini-RocketBox machine can fill and pack up to 10,000 pre-rolls daily with 2-3 people. Reduce labor & overhead costs, meet demands, accept larger contracts and more - all with one unit that grows and scales with your business.



EXCLUSIVE ROCKETBOX TECHNOLOGY

Using varying frequencies of vibration, the Mini-RocketBox PLUS+ creates high-quality, evenly packed pre-rolls that allow for a superior consumer experience. In an industry saturated with competition, producing high-quality products is key to protecting your brand's image, retaining a competitive advantage and promoting long-term, repeat customers.



TRAINING VIDEOS & PORTAL ACCESS

Efficiency is critical to keeping costs down. Each Mini-RocketBox PLUS+ includes exclusive access to the STM Client Training Portal with in-depth training information and resources, enabling your team to learn from the experts and get dialed-in quickly.

MINI-ROCKETBOX PLUS+

ACCESSORIES



143-Joint Top Tray

\$695

For Use With Any
143-Bottom Tray



72-Joint Bottom Tray

\$625

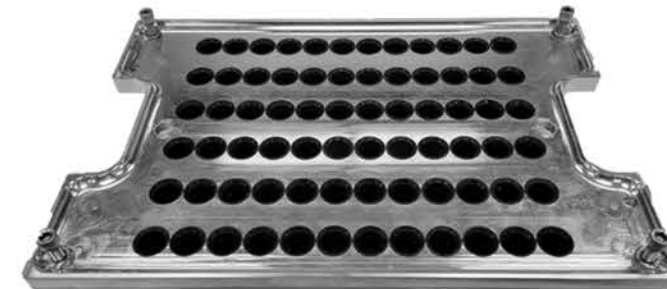
Compatible With Atomic Closer
See Page 7 for Paper Sizing



143-Joint Bottom Tray

\$695

See Page 7 for Paper Sizing



72-Joint Top Tray

\$625

For Use With Any
72-Bottom Tray



Mini Loading Box

\$402.50

Holds Bottom Tray to
Load Cones

CLICK OR SCAN



FREQUENTLY ASKED QUESTIONS

HOW DOES THE MINI-ROCKETBOX PLUS+ WORK?

The Mini-RocketBox funnels material through a top tray into empty cones through the nitrogen-filled airbag leveling system which provides a superior even vibration for a more accurate fill and pack. Other products such as the Futurola Knockbox use a tamping vibration method which is not a reliable.

WHAT IS THE DIFFERENCE BETWEEN THE 72-JOINT TRAY VS 143-JOINT TRAY VERSIONS?

The 72-joint tray is for use in the One-tray workflow and can be used with the Atomic Closer, Astro Infuser and LaunchPad scale. The 143-joint tray version is a stand alone for customers who only want to fill and pack joints at a higher volume.

WHAT IS THE ADJUSTABLE LIFT PLATE?

The lift plate levels the cones from the bottom up to provide more even filling to your target weights. No competitors offer this feature.

WHAT IS THE ADJUSTABLE TOP TRAY?

The adjustable top tray sits on top of the bottom tray and regulates fill volume for increased target weight accuracy. No competitors offer this feature.



RocketBox Comparison



FEATURES	MINI-ROCKETBOX+	ROCKETBOX 2.0	ROCKETBOX PRO
Pricing	\$6,600	\$24,950	\$59,950
Up to Per Hour* Up to Per Day*	+1250* +10,000*	+2500* +25,000*	+5000* +40,000*
Target Producer	SMALL TO MEDIUM	MEDIUM TO LARGE	LARGE & CO-PACKERS
Can Be Used in One Tray Workflow	✓	✗ **	✓
Features	NO PRE-WEIGHING, FAST, EASY TO USE AND CLEAN	453 JOINTS PER CYCLE, BUILT IN TRAINING VIDEOS	RUN MULTIPLE STRAINS & SIZES AT ONCE, AUTO TIMERS
Tray Sizes	72-JOINT 143-JOINT	453-JOINT	72-JOINT 143-JOINT
Dimensions	14"X10"X17"	30"X22"X65"	37"X 22"X 62"
Joint Sizes	70MM, 84MM, 98MM, 109MM & CUSTOM	84MM, 98MM, 109MM	70MM, 84MM, 98MM, 109MM & CUSTOM

*YOUR RESULTS MAY VARY DEPENDING ON VARIOUS FACTORS INCLUDING NUMBER OF STAFF, TRAYS, MACHINES, MATERIAL PREP & TYPE & WORFLOW.
 ** NOT RECOMMENDED FOR 1-TRAY WORKFLOW, OLDER SYSTEMS CAN BE ADAPTED HOWEVER.

PRE-ROLL AUTOMATION SYSTEMS

JUMP STARTER SYSTEM

COMPLETE PRE-ROLL AUTOMATION
TO PRODUCE UP TO 10,000 JOINTS PER DAY



INCLUDES:

- (1) Mini RocketBox+
- (1) Atomic Closer V3
- (2) Bottom Trays
- (1) Top Trays
- (1) Loading Boxes

\$62,995
SAVE OVER \$3500

COMPATIBLE W/: 84MM, 98MM, 109MM & DOG WALKERS*

- *72 JOINT TRAY ONLY, 4-6 WEEK LEAD TIME



OPTIONAL EQUIPMENT

FOR USE IN THE ONE-TRAY WORKFLOW

REVOLUTION 2.0



GRIND.

Grind size is the most important for a superior pre-roll. The STM Canna Revolution 2.0 Grinder: Precision in every grind.

LAUNCHPAD SCALE



WEIGH.

Precise weights save time and money. Invest in a lab grade scale to elevate precision in measuring.

ASTRO INFUSER



INFUSE.

Enhance your profits significantly with oil infused pre-rolls with the Astro Infuser, the world's fastest.

ATOMIC CLOSER V3 TURBO



CLOSE.

Precise weights save time and money. Invest in a lab grade scale to elevate precision in measuring.