



ROCKETBOX 2.0

ADVANCED PRE-ROLL PACKING & FILLING



CLICK OR SCAN



ROCKETBOX 2.0

**UP TO 453 PRE-ROLLS PACKED EVERY CYCLE
UP TO 2500 PER HOUR & 20K+ A DAY**

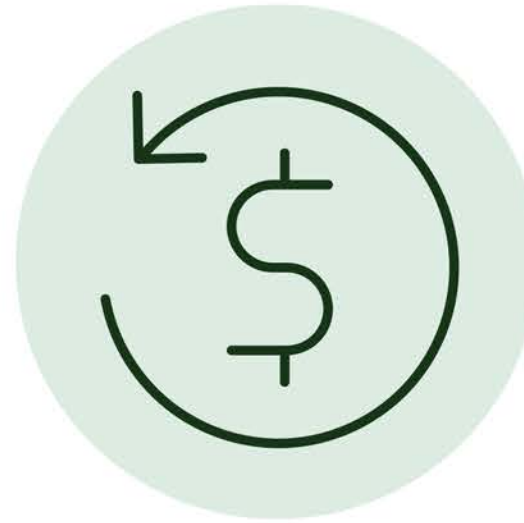
The STM RocketBox 2.0 pre-roll machine is designed to maximize pre-roll joint production while significantly decreasing labor costs. Capable of rolling 453 pre-rolled cones per cycle, the RocketBox 2.0 is the pinnacle of pre-roll machines.

- **Smart Density Software to Measure & Achieve Weight Accuracy**
- **Variable Frequencies of Vibration for Even Filling & Packing**
- **Built-In Training Mode with Tutorials**
- **Precise, Consistent and Repeatable Results**
- **Adjustable Lift plate to level cones from bottom up**
- **Adjustable top tray to regulate fill volume**
- **Compatible with 84mm, 98mm and 109mm cones.**
- **One-year parts and labor warranty.**



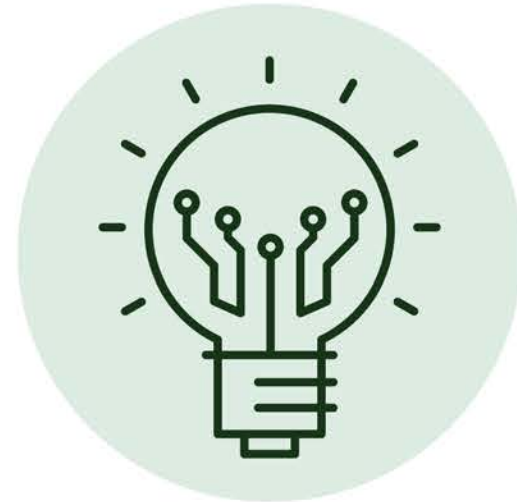
\$24,950

WHY THE ROCKETBOX?



HIGHER OUTPUT, FASTER ROI

RocketBox, the all-in-one solution, produces thousands of pre-rolls daily, catering to startups and global cannabis enterprises. Its efficiency reduces labor costs, meets demands, and facilitates business growth, allowing for the acceptance of new or larger contracts while boosting profit margins and ROI.



SMART ROCKETBOX TECHNOLOGY

RocketBox 2.0, the market's most advanced pre-rolled cone filling machine, boasts smart density software and a 7" touch screen with 3 adjustable settings. This enables your team to efficiently produce thousands of high-quality, evenly packed pre-rolls daily.



TRAINING AT YOUR FINGERTIPS

Empower your team with rapid onboarding through step-by-step tutorials in training mode and exclusive access to the STM Client Portal. In a turnover-prone industry, this offers a cost-effective solution for getting employees up to speed quickly.

ROCKETBOX 2.0

ACCESSORIES



453-Joint Top Tray

\$2,085

For Use With Any
453-Bottom Tray



453-Joint Bottom Tray

\$2,085

See Page 7 for Paper Sizing



Loading Box

\$1,150

Holds Bottom Tray to
Load Cones & Off-
Load Top Tray

CLICK OR SCAN



Maintenance Bundle \$258.75

Includes spare Knob Kit, Compressor,
Set of Washers, Flap Kit, Lift Plate Bolts,
Graduated Cylinder, and spare Top &
Bottom Tray Plastic Cones and Funnels

WHAT CONES ARE COMPATIBLE?



King Size Standard for $\pm 1g$

TRAY NAME "109 MM"

RANGE 1g

TOTAL LENGTH 109 MM

FILTER $26 \pm$ MM

TOP OPENING $12.65 \pm$ MM



1-1/4" / 98 Special Standard for $\pm .5 - .75g$

TRAY NAME "84/98 MM"

RANGE .5g - .75g

TOTAL LENGTH 84-98 MM

FILTER $26 \pm$ MM

TOP OPENING $10-10.5 \pm$ MM



To alternate between weights within these ranges, operators may raise/lower the height of the Top Tray, adjust grind size, bulk density, and/or machine cycle time. Papers used should at minimum match the dimensions listed for each tray's length and opening to achieve optimal results. Both the Top Tray's metering system and RocketBox density software are designed to work with standard sizes (84/98 MM & 109 MM), therefore custom sizes such as the Dogwalker & Cigarette/Reefer trays will require additional dialing-in.

FREQUENTLY ASKED QUESTIONS

HOW DOES THE STM ROCKETBOX WORK?

The RocketBox 2.0 funnels material through a top tray into empty cones through the nitrogen-filled airbag leveling system which provides a superior even vibration for a more accurate fill and pack. Other products such as the Futurola Knockbox use a tamping vibration method which is not a reliable.

HOW FAST IS THE ROI ON THE ROCKETBOX 2.0?

The ROI will depend on how many pre-rolls are produced. However, the RocketBox 2.0 reduces labor costs and pays for itself generally in weeks to a few months. With limited customization options, competitors joints often require tedious manual work post-cycle (hand-packing, tamping, etc.) prior to entering the closing stage. Alongside 51% faster output than its closest competitor, the RocketBox allows the operator to customize each cycle in order to accommodate different material types, reduce manual fixes and speed up the closing process.

WHAT IS THE ADJUSTABLE TOP TRAY?

The RocketBox 2.0 has an adjustable lift plate for each joint size (84, 98, 109). The lift plate levels the cones from the bottom up to provide more even filling to your target weights.

WHAT IS THE ADJUSTABLE LIFT PLATE?

The adjustable top tray sits on top of the bottom tray and regulates fill volume for increased target weight accuracy.



RocketBox Comparison



FEATURES	MINI-ROCKETBOX+	ROCKETBOX 2.0	ROCKETBOX PRO
Pricing	\$6,600	\$24,950	\$59,950
Up to Per Hour* Up to Per Day*	+1250* +10,000*	+2500* +25,000*	+5000* +40,000*
Target Producer	SMALL TO MEDIUM	MEDIUM TO LARGE	LARGE & CO-PACKERS
Can Be Used in One Tray Workflow	✓	✗ **	✓
Features	NO PRE-WEIGHING, FAST, EASY TO USE AND CLEAN	453 JOINTS PER CYCLE, BUILT IN TRAINING VIDEOS	RUN MULTIPLE STRAINS & SIZES AT ONCE, AUTO TIMERS
Tray Sizes	72-JOINT 143-JOINT	453-JOINT	72-JOINT 143-JOINT
Dimensions	14"X10"X17"	30"X22"X65"	37"X 22"X 62"
Joint Sizes	70MM, 84MM, 98MM, 109MM & CUSTOM	84MM, 98MM, 109MM	70MM, 84MM, 98MM, 109MM & CUSTOM

*YOUR RESULTS MAY VARY DEPENDING ON VARIOUS FACTORS INCLUDING NUMBER OF STAFF, TRAYS, MACHINES, MATERIAL PREP & TYPE & WORFLOW.

** NOT RECOMMENDED FOR 1-TRAY WORKFLOW, OLDER SYSTEMS CAN BE ADAPTED HOWEVER.

OPTIONAL EQUIPMENT

FOR USE IN THE ONE-TRAY WORKFLOW

REVOLUTION 2.0



GRIND.

Grind size is the most important for a superior pre-roll. The STM Canna Revolution 2.0 Grinder: Precision in every grind.

LAUNCHPAD SCALE



WEIGH.

Precise weights save time and money. Invest in a lab grade scale to elevate precision in measuring.

ASTRO INFUSER



INFUSE.

Enhance your profits significantly with oil infused pre-rolls with the Astro Infuser, the world's fastest.

ATOMIC CLOSER V3 TURBO



CLOSE.

Precise weights save time and money. Invest in a lab grade scale to elevate precision in measuring.