

ATOMIC CLOSERTM

For Machine Versions 1.0 & 2.0



USER MANUAL V2.4

(509) 204-3164 (CALL OR TEXT) | STMCANNA.COM |
SUPPORT@STMCANNA.COM

View our training
video for instructions
bit.ly/2mrR0sA



•Information & Specifications	1
•Introduction & Training Videos	2
•Components	3
•Components & Cones	4
•Preparation & Operation	5
•Operation Continued	6
•Cleaning and Maintenance	7
•Terms of Business	8-13

ATOMIC CLOSER™

USER MANUAL V2.2 Closer 1.0 & 2.0



Sesh Technologies Manufacturing, Inc.
2701 N Van Marter Rd,
Spokane Valley, WA 99206
Sales: (509) 204-3165
Web: www.stmcanna.com
Support: (509) 204-3164
support@stmcanna.com

<u>WEIGHT & DIMENSIONS</u>	Approximately 135 lbs Machine Dimensions 32" L x 33" H x 18" W
<u>VOLUME CAPACITY</u>	72 per cycle
<u>POWER</u>	Standard 120v, 60 Hertz Full-load 5.1 Amps 5 1/2 ft. cord length
<u>MATERIALS</u>	Encased in powder-coated aluminum Aluminum & other food grade components
<u>CYCLE CUSTOMIZATION</u>	Single Cycle Operation with Customizable Run Settings
<u>PAPER COMPATIBILITY</u>	Compatible with 70, 84, 98, and 109 mm cones
<u>SOFTWARE & UPGRADES</u>	HD 7" Responsive Touch Control Panel Updates available as necessary
<u>TRAINING</u>	Video tutorials available
<u>COMPLIANCE</u>	OSHA Compliant UL-Listed Components 100% Food-Grade
<u>LIFE CYCLE</u>	10 years
<u>OPERATION</u>	Modular pre-roll closing system

Always use STM equipment in a well ventilated area

Thank you for being a valuable client of STM. Our goal is to bring our customers the very best in product quality and customer service. We value your feedback to help us improve.

The Atomic Closer 1.0 and 2.0 uses a systematic mechanical system that is programmed to precisely create dutch crown closes on a variety of pre-roll sizes. Utilizing STM Canna's 72-count trays, the machine utilizes a sequential flow that seals and closes pre-rolls autonomously every 45 seconds (39 sec with 2.0).

GETTING STARTED

Follow the steps provided in this manual, watch the available training videos and you'll be closing pre-rolls in no time.

TRAINING VIDEOS

Videos are available for this machine. It is recommended that this manual be used in conjunction with it. When looking for a specific operation, refer to the time index listed at the bottom of each section in this manual. Link: bit.ly/2mrR0sA



Please Reach out to Client Services if You Need Assistance (509) 204-3164

Atomic Closer 1.0 vs 2.0

The main differences between the Atomic Closer 1.0 (2022-2023) and the newly released Closer 2.0 (2024) model include a redesigned carriage which removes the chain drive and replaces it with four Z-motors. This is for improved maintenance, reliability, accuracy and faster closing speeds. Also, the pincher jaws have been redesigned for better performance along with new programming.

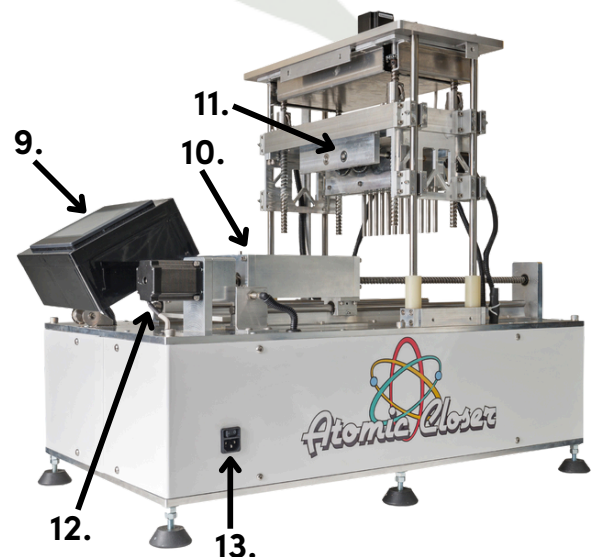
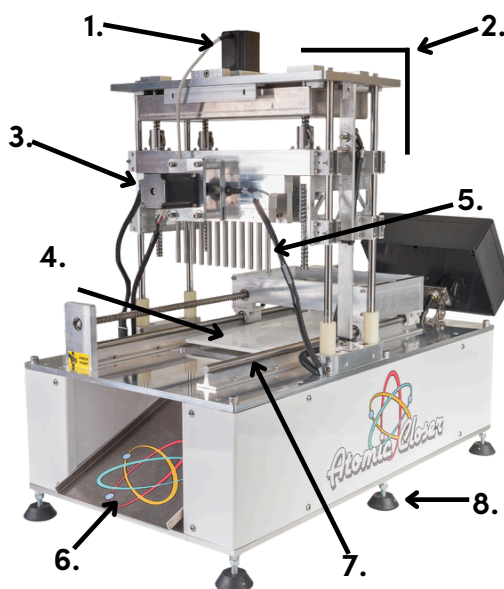


Closer 1.0



Closer 2.0

1. **Z-Motor** - Gantry motor(s). **Note:** Atomic Closer 2.0 has 4 motors on top and no carriage chain.
2. **Carriage & Plastic Casing** - Houses the Z motor, C motor, pincher jaws, push rods, and associated mechanical parts.
3. **C-Motor** - Pincher jaws motor.
4. **Lift Plate/Table** - Automatically adjusts the height of filled cones from the bottom up based on cone size to insure proper closer.
5. **Push Rods** - Creates a "dutch crown" style close/finish on pre-rolls and ejects the finished product. **Note:** Unit ships pre-installed with 109 rods. To close 98, 84mm or 70mm Dog Walker joints, the rods need to be changed (Page 5).
6. **Chute** - Where closed pre-rolls are ejected after being closed.
7. **Cart Guide Rods** - Guides the tray cart through the operational process.
8. **Rubber Feet** - Adjustable feet to level machine.
9. **Touch Screen** - 7" control panel used to selection pre-roll size and operate.
10. **Tray Cart** - Holds the trays with filled joints to be closed.
11. **Pincher Jaws** - Pinches the joints as part of stage 1 of closing.
12. **X-Motor** - Tray cart motor.
13. **Power socket & switch** - Turns the machine on and off.



COMPONENTS



1. **Spray Atomizer Bottle** - Used to spray a fine atomized mist of 1 part Isopropyl to 9 parts distilled water which solution onto the tops of the filled cones.

NOTE: The fine mist sprayed onto the joints helps to seal the paper for a smoother, crisper crown. The moisture also serves as a microantimicrobial agent and evaporates quickly, ensuring the joints are dry by the time they are fully closed.



2. **Thumb Screws** - Secures the bottom tray into the tray cart.

3. **Rod Set** - Used for 84mm, 98mm and dogwalker sized cones.



CONES

Always use good quality cones which is critical for optimal results with your Atomic Closer.

Before you place your filled STM Canna loading trays into the Atomic Closer, ensure that they are not deformed, crushed, torn, or warped. Using damaged cones with the Atomic Closer can result in inconsistent results and a lower quality product.



Helpful Tips

- Better quality cones ensure a higher success rate.
- STM recommends using Zig Zag brand cones, or reputable rolling paper manufacturers.
- Discard and bent or damaged cones

STM is a preferred Zig Zag partner. Contact sales for more info and to purchase at discounted pricing.



Home Screen

The Atomic Closer is controlled via a touch screen. You can START, STOP, and RESET the machine from here.

Pre-Roll Selection

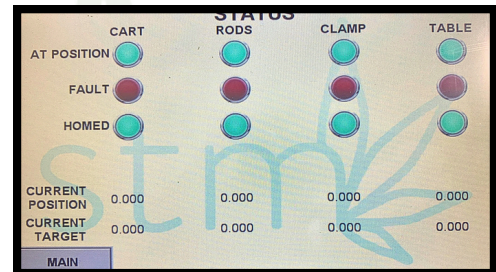
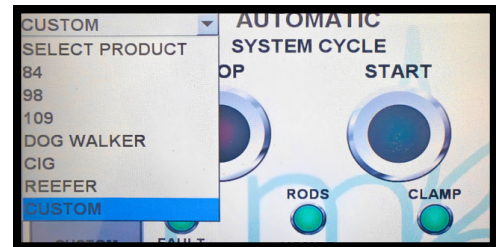
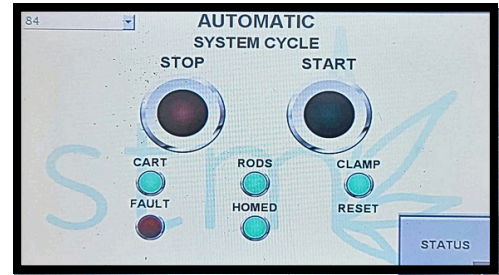
From the drop-down tab in the upper-left corner, select the correct pre-roll size of your tray. This will raise or lower the lift plate to properly accommodate your joints.

Custom Settings

The "Custom" option in the drop-down lets you adjust the lift table manually in incremental steps.

Machine Status

Located in the bottom-right corner. If any "FAULT" indicators light up red in this menu, there's an issue. Reset first, or contact Client Services



OPERATION

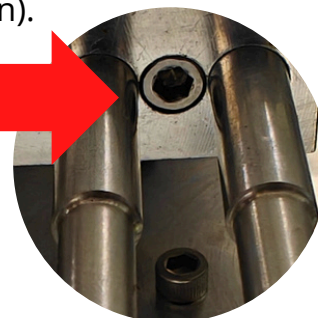
PUSH RODS

The Atomic Closer comes pre-installed with 109 push rods which work with the 109 tray size and 1 gram cones. Please insure that you are using the correct rods for your tray size. Optional 84mm, 98mm and 70mm Dog Walker are available.

To Change the Rods:

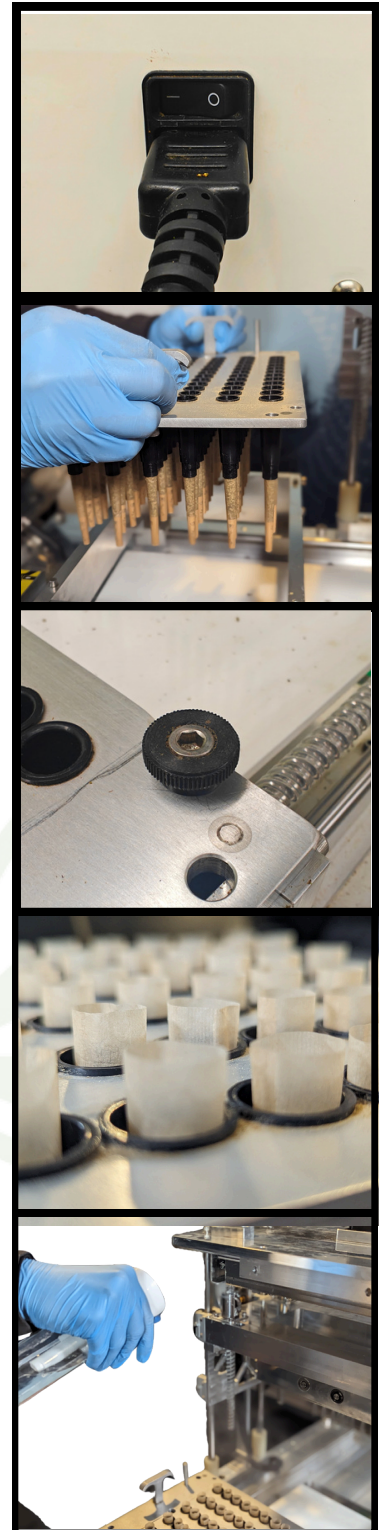
Power Off Machine First

1. With a 5/32 Allen tool, remove two bolts on each underside end of the pincher jaw clamps.
2. Remove clamps and replace with new clamps.
3. Insert bolts and tighten firmly (Do not over tighten).



USING THE ATOMIC CLOSER

1. Plug in the Atomic Closer and press the side power button.
 2. If the “Start” button does not appear on the main screen, select the “reset” button. This will take 30 seconds to finish. Do not press any other buttons until reset is complete.
 3. Load the tray into the cart.
 4. Secure the tray in opposite corners with the two provided thumb screws.
 5. Check that the fill line has at least a quarter inch of non-filled paper at the top of the joint. The empty space at the top of your pre-roll paper should be above the black ring of the cone and is imperative for proper close.
- NOTE:** There should be no material above this line. This will ensure that the pincher jaws fully close the tops of the pre-rolls.
6. With the spray bottle, mist the top of the tray with 2 to 3 full sprays evenly but not too wet. If the pinchers do not keep the papers pinched tightly, you need to spray more. If the paper is oversaturated, it can tear and fall apart, therefore, use less water.
- NOTE:** The fine mist sprayed onto the joints helps to seal the paper for a smoother, crisper crown. The moisture also serves as a micro antimicrobial agent and evaporates quickly, ensuring the joints are dry by the time they are fully closed.
7. Press Start button on screen.



WARNING: Do not put hands inside the plastic guard or near any moving parts while the machine is in operation. Always power down machine when cleaning and/or servicing and use in a well ventilated area.

Protect your machine and warranty – perform required daily cleaning and maintenance. **Skipping these daily required tasks risks costly malfunctions and will void your warranty.**

Warning: Unplug machine before every cleaning and maintenance.



Scan to view
training videos

HOW TO CLEAN

1. Remove trays from the machine.
2. Blow out loose material from under the lift table with a can of air.
3. Carefully wipe down the tray cart, lift table, rods, pincher jaws, and outside of the machine with isopropyl alcohol on a microfiber cloth or paper towel.

IMPORTANT DAILY MAINTENANCE - FAILURE TO DO THIS WILL VOID WARRANTY.

1. Lubricate the carriage chain, cart guide rods, carriage ball screws, and cart ball screws with a lithium food grade grease. **Note: Atomic Closer 2.0 with 4 motors on top does not have a carriage chain.**
2. Turn machine on and “Home” the machine pressing the STOP and the RESET buttons on main screen, then run one cycle to lubricate the necessary parts.
3. Remove plastic carriage paneling by removing the six external screws.
4. Visually inspect the carriage chain for any changes.
5. If any issues/changes are noticed, please contact Client Services at (509) 204-3164.

SAFETY PRECAUTIONS

General Safety:

- Only trained and authorized personnel are permitted to operate STM Canna pre-roll machinery
- Never operate the machinery if you are feeling unwell, fatigued, or under the influence of drugs and alcohol
- Familiarize yourself with the machine's operating manual and emergency shutdown procedures before operation
- Keep the work area clean and free of debris
- Report any malfunctions or safety hazards immediately to the supervisor
- Do not attempt to repair or modify the machinery unless specifically authorized and trained

Ventilation:

- All STM Canna pre-roll machines must be operated in a well-ventilated area. Ensure adequate airflow to minimize the accumulation of dust, kief, and other airborne particles. This may require the use of a local exhaust ventilation (e.g., dust collection systems) in addition to general room ventilation
- Regularly inspect and maintain ventilation systems to ensure their effectiveness

Personal Protective Equipment (PPE):

- The following PPE must be worn at all times when operating or near the STM Canna pre-roll machinery
 1. Safety glasses: ANSI Z87.1 approved safety glasses with side shields are required to protect against flying particles
 2. Dust Mask/Respirator: A NIOSH-approved N95 or higher respirator or dust mask is required to protect against inhalation of dust and kief. (Specify the appropriate respirator type based on risk assessment and consultation with safety professionals. Higher levels of protection, such as powered air-purifying respirator (PAPR), may be required depending on the environment and materials being processed.)
 3. Gloves: Appropriate gloves (e.g., nitrile, latex-free) should be worn to maintain hygiene and prevent contamination of the product
 4. Hearing Protection: If noise levels exceed 85 dbA, hearing protection (e.g., earplugs or earmuffs) must be worn. Conduct a noise assessment to determine the required level of protection
 5. Lab Coat/Smock: A lab coat or smock is recommended to protect clothing from contamination

Machine-Specific Safety:

- Include specific safety precautions for each model of STM Canna pre-roll machines. This should include information on emergency stops, pinch points, moving parts, electrical safety, etc. Consult the manufacturer's documentation for this information
- Never bypass or disable safety interlocks, sensors, or guards
- Ensure all guards and safety features are in place and functioning correctly before starting the machine
- Keep hands and other body parts away from moving parts
- Do not reach into the machine while it is operating
- Use caution when handling sharp objects or tools



SAFETY PRECAUTIONS

CONTINUED

Fire Safety:

- Keep flammable materials away from the machinery
- Ensure fire extinguishers are readily available and personnel are trained in their use
- In case of fire, follow established emergency procedures

Pre-Operation Checks:

- Inspect the machine for any damage or missing parts
- Ensure all safety guards are in place and functioning correctly
- Verify that the area around the machine is clean and free of obstructions
- Check the material to be processed for any foreign objects
- Turn on the ventilation system
- Put on required PPE

Operation:

- Follow the manufacturer's operating instructions for the specific machine model
- Do not force any parts of the machine
- If the machine malfunctions, stop operating immediately and report the issue to the supervisor

Post Operation:

- Turn off the machine and disconnect it from the power source
- Clean the machine according to the manufacturer's instructions
- Remove and dispose of PPE properly
- Clean the work area
- Record any issues or maintenance performed in the machine's logbook

Maintenance:

- Regular maintenance is crucial for safe and efficient operation
- Only trained and authorized personnel should perform maintenance on the machinery
- Follow the manufacturer's maintenance schedule and procedures
- Lock out and tag out the machine before performing maintenance
- Keep maintenance records

Emergency Procedures:

- In case of emergency (e.g., fire, injury, machine malfunction), follow established emergency procedures
- Immediately stop operation of the machine
- Notify the supervisor and first responders
- Administer first aid if necessary
- Document the incident

Training:

- All personnel operation or maintaining STM Canna pre-roll machinery must receive thorough training on this SOP, machine operation, and safety procedures

Purchasing Terms & Conditions

I hereby confirm that I have thoroughly reviewed and agreed to all terms and conditions herein:

1. I understand that all products are first-come first-serve and that receipt of payment is required in order to receive a confirmed shipping date in the queue. Due to high demands, certain items may have a lead time of 4-8 weeks or more from payment date, unless otherwise stated.
2. I understand and agree that following the receipt of my invoice, STM Canna must receive payment within a maximum of 7 days before the invoice expires – leaving lead times, quoted prices, specials and discounts on all items subject to change.
3. I understand that if a deposit is applicable for any special reason, my deposit is non-refundable.
4. I agree to the Customer Awareness Program and Terms of Business herein.

Customer Awareness Program (C.A.P.)

STM takes pride in the products we make and the services we offer. To ensure our customers fully understand the services we provide, along with the capabilities and expectations of our products, we have executed and outlined the Customer Awareness Program contents below:

1. A 12-month warranty on each product that is applicable with regards to manufacturer's defects, including parts and labor.
2. STM Client Services department is dedicated to ensuring the success and satisfaction of all STM clients. As such, product on-boarding programs are provided to familiarize our clients with their new equipment.
3. STM Tech department provides our clients with all software updates, phone support and onsite support, as needed.
4. Training with our technicians to train your staff on best practices to accomplish your desired results for a quality finished product.
5. An easy-to-use client portal with tools such as product F.A.Q.'s and Best Practices, along with an extensive video library to help guide you towards success with your STM equipment.

Expectations & Capabilities of Equipment**STM RocketBox Pro, RocketBox 2.0 & STM Mini-RocketBox**

With training from our on technical training staff, you can expect to receive a complete and comprehensive training program to educate your team on best practices, as well as the cleaning and maintenance of your machine and accessories.

Any and all RocketBox series machines must have liner bags in them during use or warranty will be voided. The RocketBox Pro and Mini use standard 10 gallon trash liners. The liners prevent material from getting inside the machine and for easy clean-up. The RocketBox 2.0, uses a 100 gallon liner. For more information, refer to the machines manual or reach out to Client Services.

By following the guidelines provided to you via the user manual and training, you will be able to produce a quality and consistent product that will be easily repeatable. The shaker box within the machine contains an area where material may escape during operation. With the 400-hour break-in period, STM advises against re-purposing this excess waste due to potential metal contaminants residing in the shaker box from regular usage.

Results are not guaranteed and can greatly vary from operation to operation.

Always use STM equipment in a well ventilated area and with proper PPE if needed.

STM Revolution 2.0 and Mini-Revolution

- With the STM Client Success Program, Pre-Grind Checklist and other guidelines provided, you will be able to achieve the highest quality and most consistent grind for your needs.
- For best results and ease of operation, humidity control is necessary. A 10% or lower moisture content is recommended. Although the Revolution may be able to operate at higher levels, it is not recommended and may cause clogs and overheating.
- Safety features are in place to ensure proper use of the machine and are meant to stop operation if handled/operated improperly. The display screen will notify the user if any features are not in the proper state.
- A regular cleaning routine should be in place to ensure proper function and longevity of the Revolution and its blades.
- A Pre-Grind Check List is conveniently located next to your display unit. (2.0. Version Only)
- Results are not guaranteed and can greatly vary from operation to operation.

STM LaunchPad

Installation is to be performed by STM canna Technicians Only

Confirm the installation location meets the following criteria:

- The surface is stable, level, and vibration-free.
- Away from direct sunlight, heat sources, and drafts.
- Climate control to maintain 64° f – 77° f operating temperature range with XX% humidity

- LaunchPad is accessible for routine maintenance and calibration.
- Be aware of the proximity to other equipment.
- Ensure the LaunchPad scale is positioned away from equipment that generates heat, vibration, or fumes.
- Confirm the shipping crate security seal is intact and that the LaunchPad scale has been in the final.

Install location for 24 hours before the STM Canna technician's arrival

Verify Power Quality:

- The circuit is dedicated to the LaunchPad and has its own earth-ground probe.
- 110–120-volt AC at 15-20 amps. < 4VAC neutral to earth.
- STM Canna supplied a UPS/Surge protector between the outlet and LaunchPad scale.

Safety considerations: Prioritize safety during installation and operation:

- Follow proper lifting techniques when moving or installing the scale to avoid personal injury or damage to the equipment.
- Adhere to any safety protocols or guidelines specific to the lab environment, such as wearing appropriate personal protective equipment (PPE) when working with hazardous substances.

Atomic Closer and Astro Infuser

Safety considerations: Prioritize safety during installation and operation:

- Follow proper lifting techniques when moving or installing the scale to avoid personal injury or damage to the equipment.
- Adhere to any safety protocols or guidelines specific to the lab environment, such as wearing appropriate personal protective equipment (PPE) when working with hazardous substances.

TERMS OF BUSINESS & WARRANTY

Who is Covered: Please note that results with STM Canna & STM Supply products can yield varying results which depend on a myriad of factors, including but not limited to: correct grind size, age of material, quality of material, moisture content, strain, temperature, correct sized cone usage, quality of cones used, skill of the operator, and more. Our quoted weight ranges for flower, and trim are all general averages that have been reported to us by our customers, however your material may behave completely differently. We take no responsibility whatsoever for your results, only for the working functionality of our products. If you have any questions or concerns, please do not hesitate to talk to us about this very important disclaimer.

Extent of Warranty:

There are no warranties on paper products. Machines come with a 1-year parts and labor warranty. See Returns below.

Troubleshooting:

- Reference your instruction sheet and double-check all instructions.
- Always take time to examine problems in detail.
- When all else fails, please call the STM technical support line at (509) 204-3164 or email us at clientservices@stmcanina.com.

The technical line is open 9:00am – 5:30pm Monday through Friday, Eastern Time. Please have the following information handy: Name of Company the purchase was made under, Date of Purchase, and Serial number.

Terms:

All orders must be paid in full before the order is placed. Order quotes expire within 7 days. STM Canna & STM Supply reserve the right to specify collection by certified check, money order, or company check. Personal checks are not accepted.

Shipping:

All orders must be paid in full before the order is shipped. Order quotes expire within 10 days.

Orders received will fall in line and be serviced accordingly where the shipment date may be sooner than originally quoted. We will ship by the most reasonable means based on the volume of the order, unless otherwise specified. For international orders, border and customs-related costs are the responsibility of the purchaser.

Special Orders:

All special-order items must be paid in full before the order is placed. These items are non-returnable and no refund will be given. All special-order items will also take a longer period of time for the customer to receive, which will be quoted at the time of payment.

Liability:

The purchaser of any products releases the manufacturer of those parts and STM Canna from all liabilities pertaining to use of the products.

Returns:

No Refunds/Exchanges: We do not accept returns or exchanges unless the item purchased is defective. All items that we ship are insured; if an item comes that is damaged from shipping, we will work closely with you to get you replacement parts as soon as possible. We may also request pictures or other identifying information to establish that damage was caused by the shipping carrier.

In the event of an approved refund or exchange at STM Canna's discretion, there will be a minimum 25% restocking fee.

If you receive an item you believe is defective, please contact us with details of the product at (509) 204-3164 or email us at clientservices@stmcanna.com.

We may ask you for pictures, video, descriptions, and other identifying information to make a determination. If you are unable to provide adequate documentation requested, your return request will be denied. If your item is deemed defective, which is solely at STM's discretion, we will issue you an RMA # which you will need to place in and on the package. After receiving your RMA #, you may send the item to:

STM Canna
2701 N Van Marter Rd
Spokane Valley, WA 99206

Upon receipt of the returned product, we will fully examine it and notify you via e-mail, within a reasonable period of time, whether you are entitled to replacement as a result of the defect. If you are entitled to a replacement, we will replace the product at no additional cost to you.

Since ownership of product transfers at the FOB point, claims for damaged, lost, or short shipments must be made at the time of receipt.

Technical Questions:

See your local dealer or contact us directly at (509) 204-3164 or email to clientservices@stmcanna.com.



**Scan to view
training videos**